

CERTIFIED LAND CORNER RECORDATION

DESCRIPTION OF CORNER EVIDENCE FOUND, AND ORIGINAL RECORD (if known)

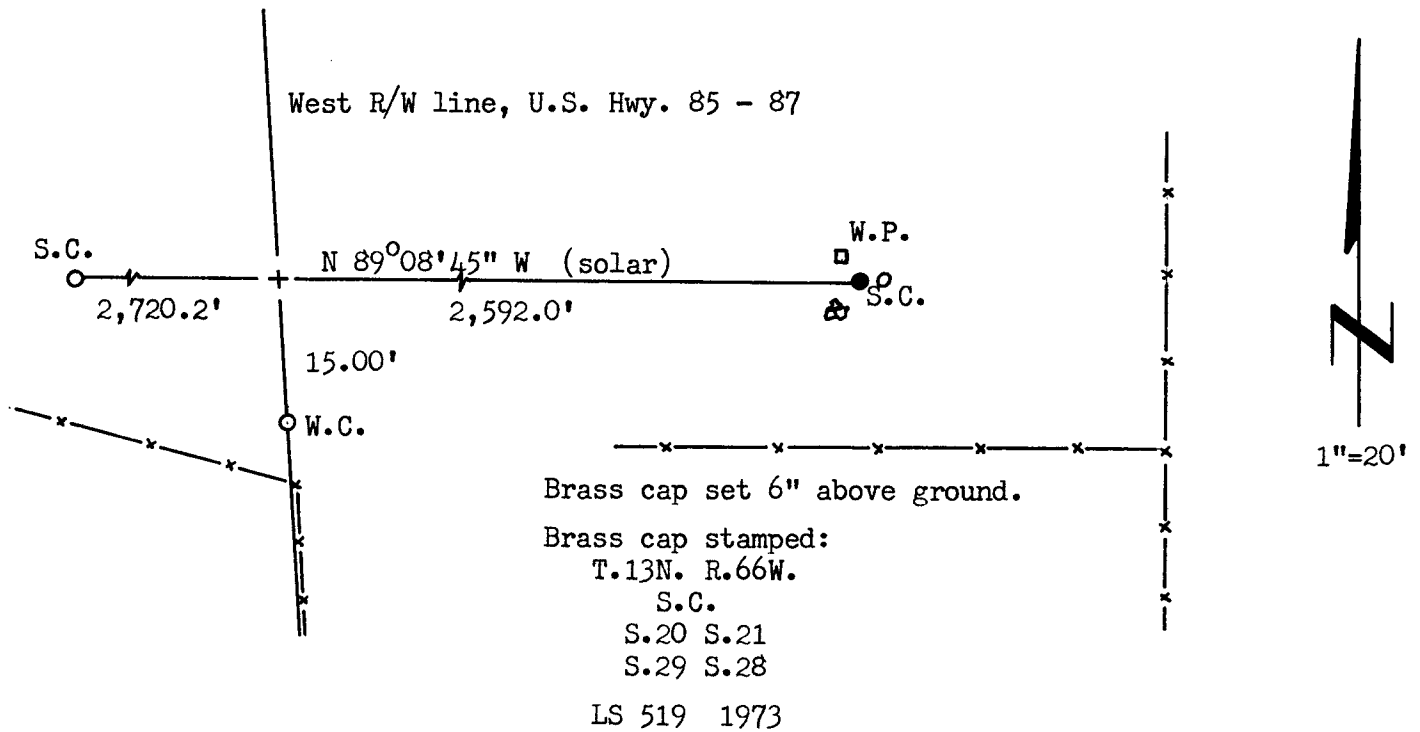
LOCATION S.20 S.21 S.29 S.28 T.13N., R.66W. 6th P.M.	Found a granite stone, 8" x 8" x 18" with 2 grooves on south and 4 grooves on east face. Stone was found leaning but apparently in place.
--	--

DESCRIPTION OF MONUMENT AND ACCESSORIES ESTABLISHED TO PERPETUATE THE ORIGINAL LOCATION OF THIS CORNER:

At the corner: Set a 1½" dia. x 30" long iron pipe with brass cap.

Accessories: Set a 4" x 4" Redwood post, 4' long, 3 feet NW of corner monument.
 Left stone as memorial.

SKETCH, WITH COURSE AND DISTANCE TO ADJACENT CORNER IF DETERMINED IN THIS SURVEY.
 (May Sketch or Paste Reproduction on Reverse Side.)



I, R.L. Hudson certify that I have carefully performed ~~or reviewed~~ the work done on the diagrammed corner as reported on this recordation form and approve the same.

R.L. Hudson
 Signature of Surveyor

Wyoming L.S. No. 519
 Registration No.

STATE OF WYOMING,
 Office of Clerk and Recorder,
 County of Saramie

This "corner record" was filed for record on the 18th day of January, 1973, was noted on the cross-index plat and is assigned page No. 13-166, in book No. ONE.

Johy B. Hillman
 County Official

Cross Index No. _____	T. _____	R. _____	Mer. _____
_____	T. _____	R. _____	Mer. _____
_____	T. _____	R. _____	Mer. _____
_____	T. _____	R. _____	Mer. _____
_____	T. _____	R. _____	Mer. _____
_____	T. _____	R. _____	Mer. _____
_____	T. _____	R. _____	Mer. _____

Photographed _____
Indexed _____
Posted _____

The State of Wyoming }
County of Laramie } SS

This instrument was filed for record
at 10:25 o'clock P. M. on the
18th day of January
A. D. 19 23 and duly recorded in
Book _____ on page _____

John B. Williamson

County Clerk & Ex-Officio Register of Deeds
Deputy